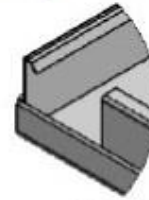


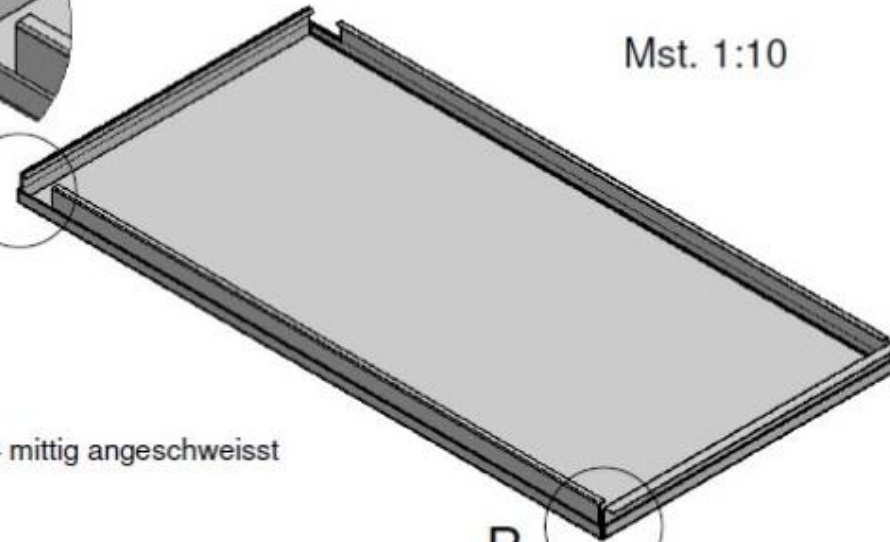
A (1 : 4)



A

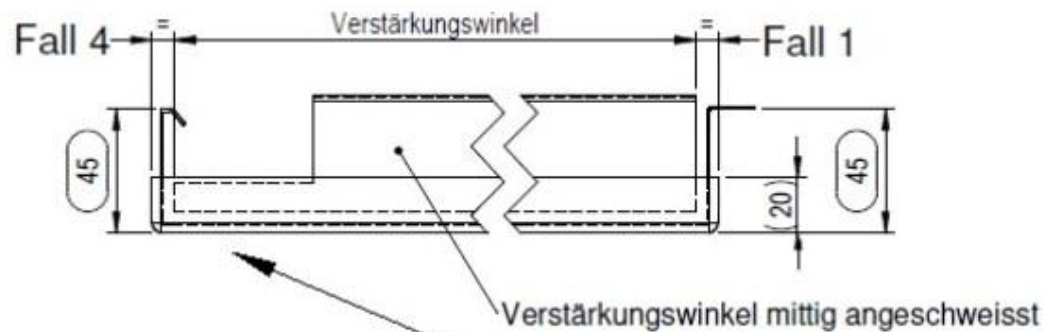
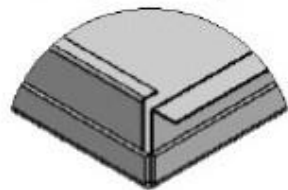
F1 und F4 mittig angeschweisst

Mst. 1:10



B

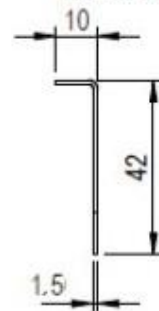
B (1 : 4)



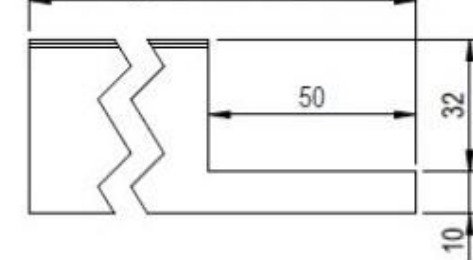
Mst. 1:2

- Sicht in die Masche
- Sicht gegen die Masche

Mst. 1:2



Verstärkungswinkel = Kasette - 20mm



Verstärkungswinkel: 1x wie gezeichnet, 1x gegengleich